



THE EASTERN SPECIALTY COMPANY

OPERATING INSTRUCTIONS

CAT. 221 ACRYLIC PADLOCK CAT. 222 POLYPROPYLENE PADLOCK

TESCO Acrylic Padlock Meter Seals (Catalog No. 221) and Polypropylene Padlock Meter Seals (Catalog No. 222) are a low-cost solution providing a tamper-evident meter seal. TESCO meter seals have a high level of customization, which includes colors, imprinting, and barcoding. Customization is available at standard pricing rates.



CAT. 221

The clear, acrylic core is molded over a colored, acrylic shell and is designed to reveal tampering. Combined with a stainless steel hasp, TESCO meter seals are ideal for outdoor use.



CAT. 222

The polypropylene (or HDPE) body and stainless steel hasp make TESCO meter seals ideal for outdoor use.

INSTRUCTIONS:



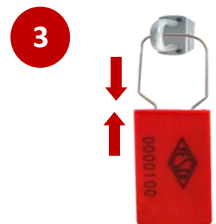
1

After deploying the electric meter, insert the hasp of the meter seal in the opening of the designated location.



2

Align and attach the end of the hasp in the meter seal body.



3

Once its hasp is properly aligned, move the body of the meter seal and the hasp towards each other to lock it.

CAUTION

With its tamper-evident design, once locked, the meter cannot be unlocked without destroying the seal.