

Safety Equipment

Catalog No.

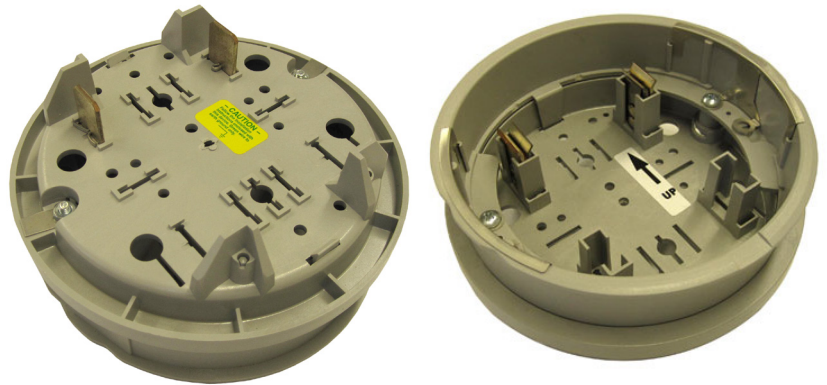
251, 252, 253 & 254

Service Disconnect Adapters & Shield

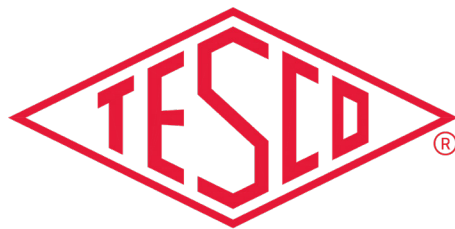
TESCO's Service Disconnect Adapter (Catalog No. 251) disconnects customer load, while maintaining power to the meter. The meter continues reading and communicating for AMR/AMI operations, while disabling service on the load side. For utilities that do not want to maintain power to the meter, TESCO also offers a non-energized version (Catalog No. 252). The non-energized Service Disconnect Adapter has highly durable plastic jaw blades in place of the plated copper jaw blades.

Utilities that require the meter to be energized, but also tilted at a 45° angle can use Service Disconnect Catalog No. 254.

The TESCO Service Disconnect Adapters are constructed of UV stabilized plastic, fiberglass-reinforced polycarbonate, and have a UL-94-5VA flame rating.



Top: Service Disconnect Adapter Catalog No. 251
Bottom:: Service Disconnect Adapter Catalog No. 254



TESCO METERING

Safety Equipment

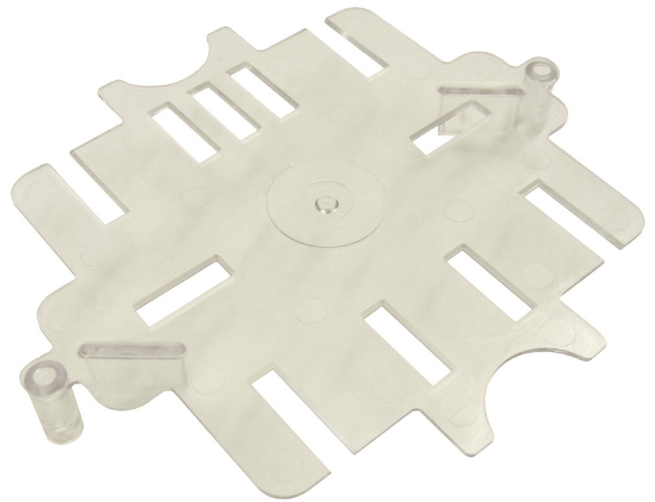
Catalog No.

251, 252, 253 & 254

Service Disconnect Adapters & Shield

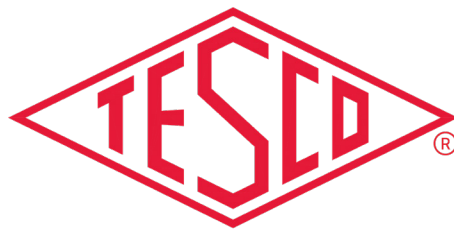
Specifications for 251, 252, and 254

- UV stabilized plastic
- UL 94-5VA flame rating
- Fiberglass reinforced polycarbonate
- 1.5" stand-out dimension
- Plated Copper Jaw Blades (Catalog No. 251 & 254)
- Plastic Jaw Blades (Catalog No. 252)



Service Disconnect Shield Catalog No. 253

TESCO also offers a **Service Disconnect Shield (Catalog No. 253)**, which gives meter technicians a quick visual indication of disconnected service by tilting the meter 45°. The Service Disconnect Shield is a cost effective way to safely and easily disconnect power, while leaving the meter on-site. the TESCO Service Disconnect Shield is for use with 1S & 2S Meter Forms only.



TESCO METERING

925 Canal Street, Bristol, PA 19007 • ph: 215.228.0500 • tescometering.com

Made
in the
USA